

# Sun Valley Lanes "House" Condition



**Oil Pattern Distance:** 42 Feet      **Reverse Brush Drop:** 40 Feet      **Oil Per Board:** 50 uL  
**Forward Oil Total:** 12.1 mL      **Reverse Oil Total:** 12.95 mL      **Volume Oil Total:** 25.05 mL  
**Forward Boards Crossed:** 242 Boards      **Reverse Boards Crossed:** 259 Boards      **Total Boards Crossed:** 501 Boards

	Start	Stop	Loads	Speed	Crossed	Start	End	Feet	T.Oil
1	2L	2R	2	10	74	0.0	1.4	1.4	3700
2	2L	6R	1	10	33	1.4	2.8	1.4	1650
3	10L	10R	3	14	63	2.8	8.7	5.9	3150
4	11L	11R	2	14	38	8.7	12.6	3.9	1900
5	12L	12R	2	18	34	12.6	17.7	5.1	1700
6	2L	2R	0	22	0	17.7	26.0	8.3	0
7	2L	2R	0	22	0	26.0	33.0	7.0	0
8	2L	2R	0	30	0	33.0	42.0	9.0	0

Conditioner:  
Type In or Select One

TransferType:  
Type In or Select One

Forward



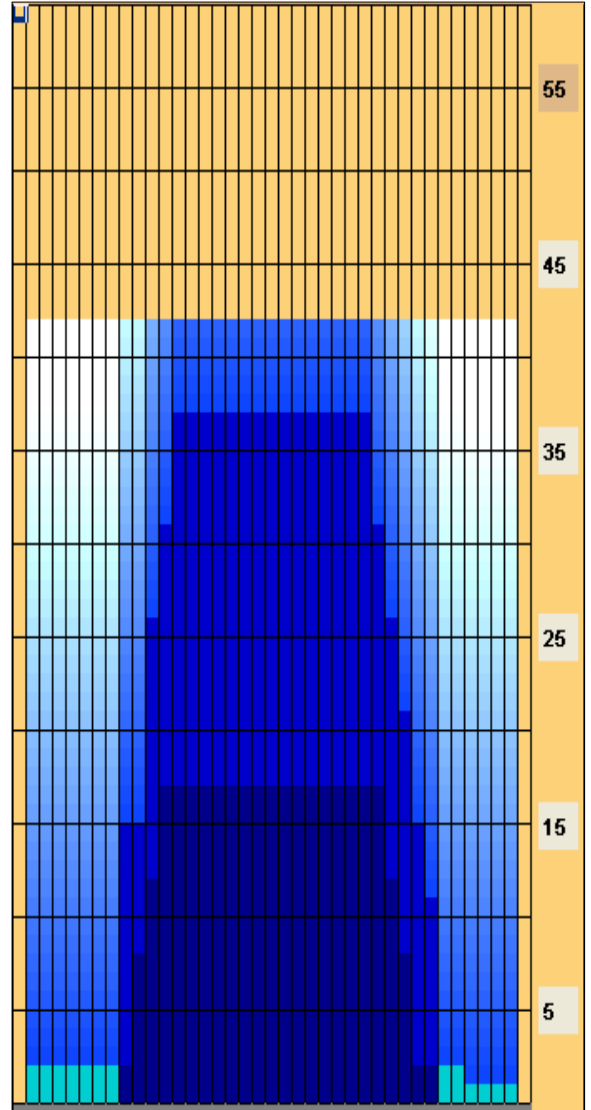
Reverse



Combined



Buff



	Start	Stop	Loads	Speed	Crossed	Start	End	Feet	T.Oil
1	2L	2R	0	30	0	42.0	37.0	-5.0	0
2	13L	13R	2	22	30	37.0	30.8	-6.2	1500
3	12L	12R	2	18	34	30.8	25.7	-5.1	1700
4	11L	11R	2	18	38	25.7	20.6	-5.1	1900
5	12L	10R	3	14	57	20.6	14.7	-5.9	2850
6	9L	9R	2	14	46	14.7	10.8	-3.9	2300
7	15L	8R	3	14	54	10.8	4.9	-5.9	2700
8	2L	2R	0	10	0	4.9	0.0	-4.9	0

Item	3L-7L:18L-18R	8L-12L:18L-18R	13L-17L:18L-18R	18L-18R:17R-13R	18L-18R:12R-8R	18L-18R:7R-3R
Description	Outside Track:Middle	Middle Track:Middle	Inside Track:Middle	Middle: Inside Track	Middle:Middle Track	Middle:Outside Track
Track Zone Ratio	8	2.55	1.05	1	1.76	10

